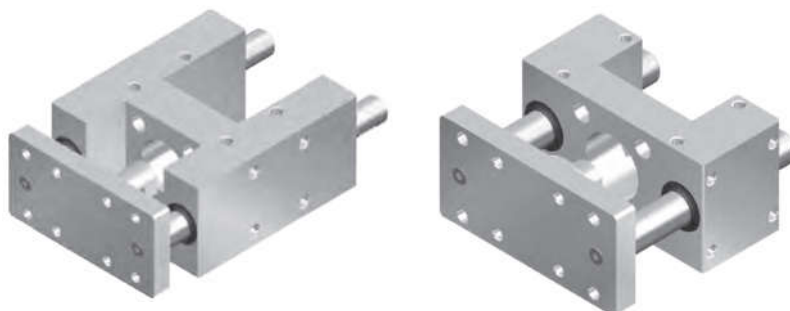


LINEAR GUIDES

General Information



These linear guides are for use with all ISO 15552 and ISO 6432 cylinders. They are heavy duty devices designed for high loads, fast movements and precision positioning.

Applications include machine tools, packaging and general handling. Choose from 3 versions and 10 sizes.

Technical Data

Piston diameters: Ø 12, 16, 20, 25, 32, 40, 50, 63, 80, 100 (mm)

Piston rod: C45 chromium-plated steel

Body: Anodised aluminium

Seals: NBR

Coupling: Self-aligning

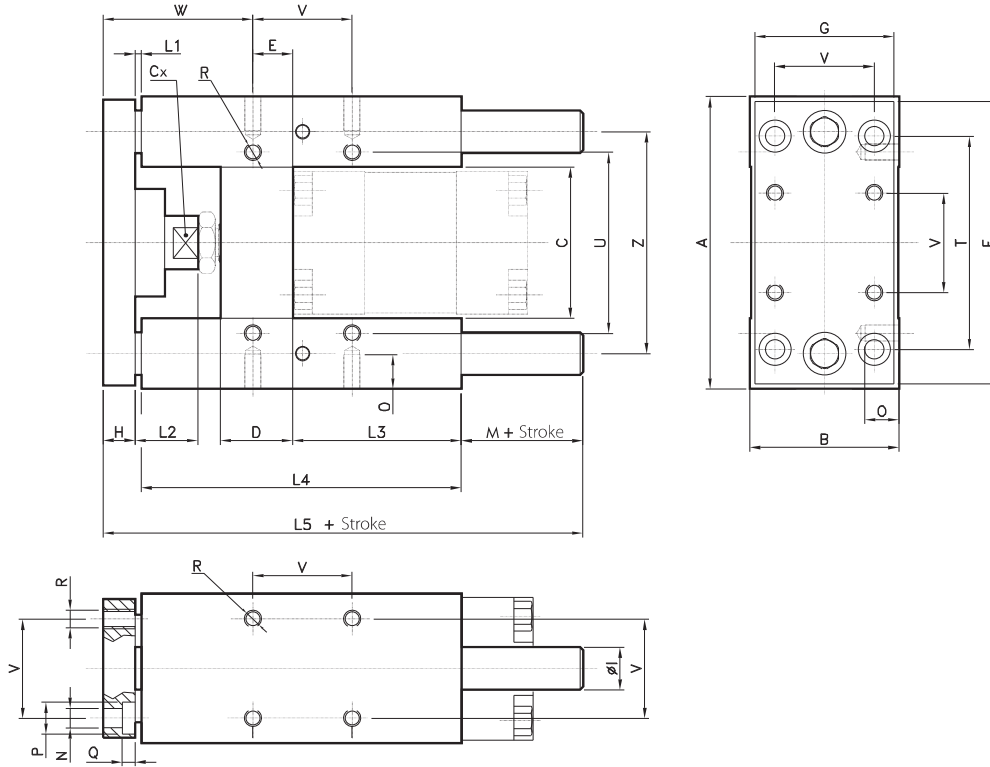
Ambient temperature range: -20 °C to +80 °C

Order Code

Order specifications		KUG.	2008.	32.	050
Series number		KUG			
Version					
	H shape with slide bushings		2004		
	H shape with ball bushings		2005		
	C shape with self-lubricating bushings		2008		
Piston diameter					
	Ø 12			012	
	Ø 16			016	
	Ø 20			020	
	Ø 25			025	
	Ø 32			032	
	Ø 40			040	
	Ø 50			050	
	Ø 63			063	
	Ø 80			080	
	Ø 100			100	
Stroke					
	mm				xxx

Linear Guide Components H Shape - Ø 32 - 100 mm

ISO 15552

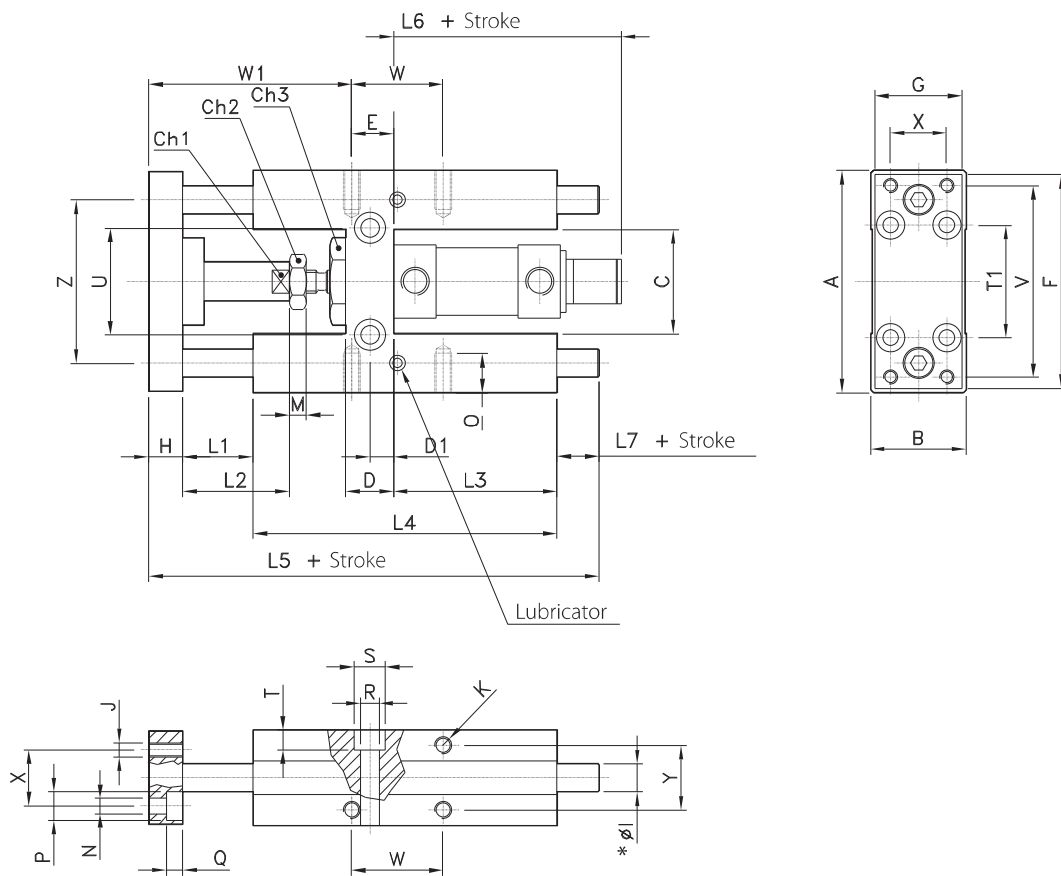


Ø	A	B	C	Cx	D	E	F	G	H	Ø1	L1	L2	L3
32	97	49	51	15	24	4.3	93	45	12	12	25	42	75
40	115	58	58.2	15	28	11	112	55	12	16	25	42	80
50	137	70	70.2	20	34	18.8	134	65	15	20	25	50	78
63	152	85	85.2	20	34	15.3	147	80	15	20	25	50	106
80	189	105	105.5	26	50	25	180	100	20	25	25	50	111
100	213	130	130.5	26	55	30	206	120	20	25	25	50	128

Ø	L4	L5	M	N	O	P	Q	R	T	U	V	W	Z
32	125	187	25	6.6	12	11	6.5	M6	78	61	32.5	82.7	74
40	140	207	30	6.6	12	11	6.5	M6	84	69	38	86	87
50	148	223	35	9	16	15	8.5	M8	100	85	46.5	91.2	104
63	178	243	25	9	16	15	9	M8	105	100	56.5	96.7	119
80	195	267	27	11	20	18	11	M10	130	130	72	104	148
100	218	290	27	11	20	18	11	M10	150	150	89	105	173

Linear Guide Components H Shape - Ø 12 - 25 mm

ISO 6432



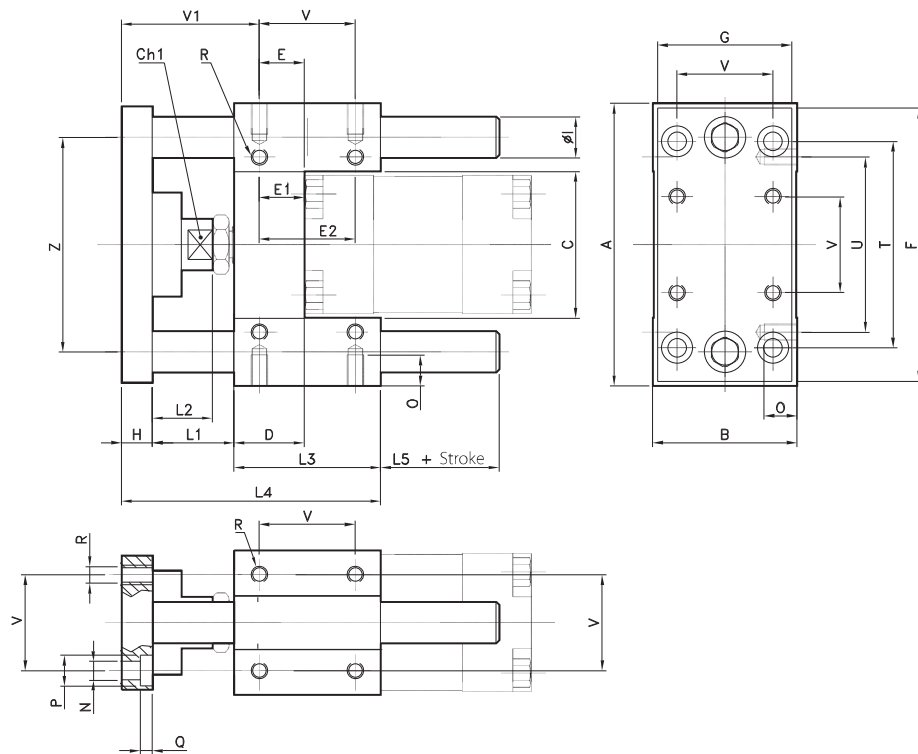
Ø	A	B	C	Ch1	Ch2	Ch3	D	D1	E	F	G	H	Ø11*	Ø12*	J	K	L1	L2	L3	L4
12-16	69	30	30	8	10	24	12	6	8	66	29	10	10	8	M4	M4	25	18	46	68
20	79	34	37	12	13	27	17	8,5	15	78	32	12	12	10	M5	M6	25	40	58	108
25	79	34	37	12	17	27	17	8,5	15	78	32	12	12	10	M5	M6	25	40	58	108

Ø	L5	L6	L7	M	N	O	P	Q	R	S	T	T1	U	V	W	W1	X	Y	Z
12-16	123.5	73	20.5	4	4.5	6	8	4.5	5.5	9	5.5	32	24	58	18	49	18	22	49.5
20	166	87	21	5	5.5	9	10	7.5	6.5	11	6.5	38	38	68	32.5	20	72	23	58
25	166	87	21	5	5.5	9	10	7.5	6.5	11	6.5	38	38	68	32.5	20	72	23	58

* Note:
 Ø 11 = with slide bushings (KUG.2004)
 Ø 12 = with ball bushings (KUG.2005)

Linear Guide Components C Shape - Ø 32 - 100 mm

ISO 15552

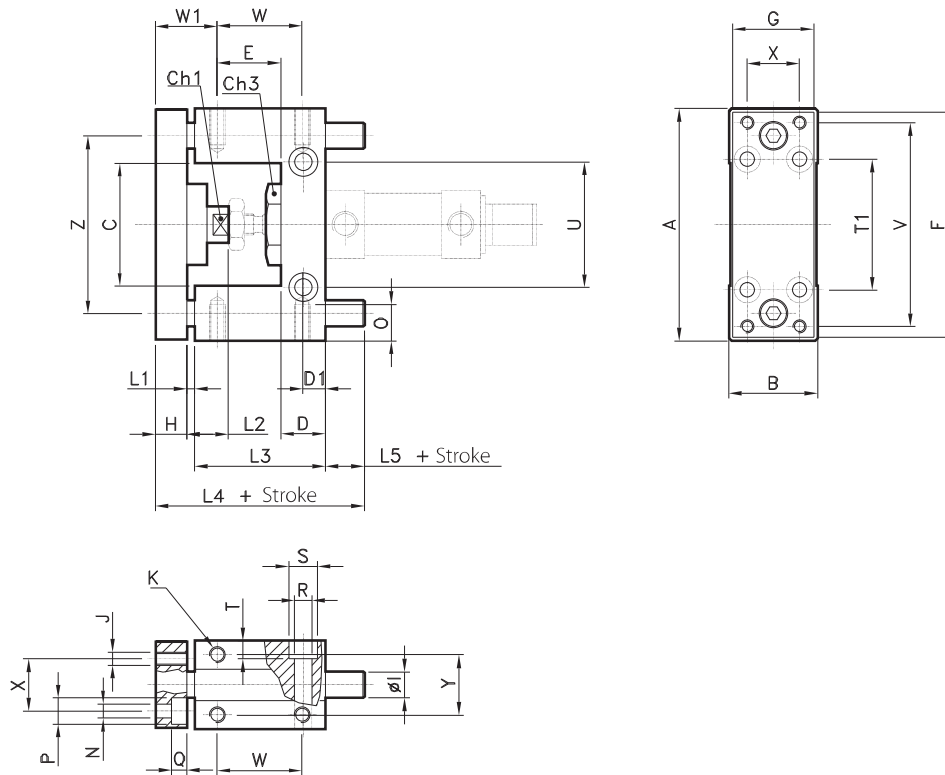


Ø	A	B	C	Ch	D	E	E1	E2	F	G	H	ØI	L1
32	97	49	51	15	17	9.25	9.25	32.5	93	45	12	12	42
40	115	58	58.2	15	21	11	11	38	112	55	12	16	43
50	137	70	70.2	20	25	18.8	18.8	46.5	134	65	15	20	49
63	152	85	85.2	20	25	15.3	15.3	56.5	147	80	15	20	49
80	189	105	105.5	26	34	25	14	50	180	100	20	25	53
100	213	130	130.5	26	39	28.5	19	70	206	120	20	25	54

Ø	L2	L3	L4	L5	N	O	P	Q	R	T	U	V	V1	Z
32	25	48	102	18	6.6	12	11	6.5	M6	78	61	32.5	61.75	74
40	25	58	113	17	6.6	12	11	6.5	M6	84	69	38	65	87
50	29	59	123	20	9	16	15	8.5	M8	100	85	46.5	70.2	104
63	29	76	140	21	9	16	15	9	M8	105	100	56.5	73.7	119
80	27	90	163	30	11	20	18	11	M10	130	130	72	82	148
100	27	110	184	30	11	20	18	11	M10	150	150	89	84.5	173

Linear Guide Components C Shape - Ø 12 - 25 mm

ISO 6432



Ø	A	B	C	Ch1	Ch2	D	D2	E	F	G	H	Ø1	J	K	L1	L2
12-16	69	30	30	8	24	12	6	19.5	66	29	10	10	M4	M4	3	15
20-25	79	34	37	12	2	17	8.5	24.25	78	32	12	12	M5	M6	3	18

Ø	L3	L4	L5	N	O	P	Q	R	S	T	T1	U	V	W	W1	X	Y	Z
12-16	38	66.5	15.5	4.5	6	7.5	4.5	5.5	9	5.5	32	24	58	25	19.5	18	22	49.5
20-25	48	83	20	5.5	9	10	7.5	6.5	11	6.5	38	38	68	32.5	21.75	20	23	58